

A-typic

Concept design for
The Sleep Event 2011

ligne roset®

anne kyyrö quinn

DuPont™
CORIAN®

LANO
My kind of carpet!

ligna

Villeroy & Boch
1744

■ GEBERIT

BRISTAN

rare

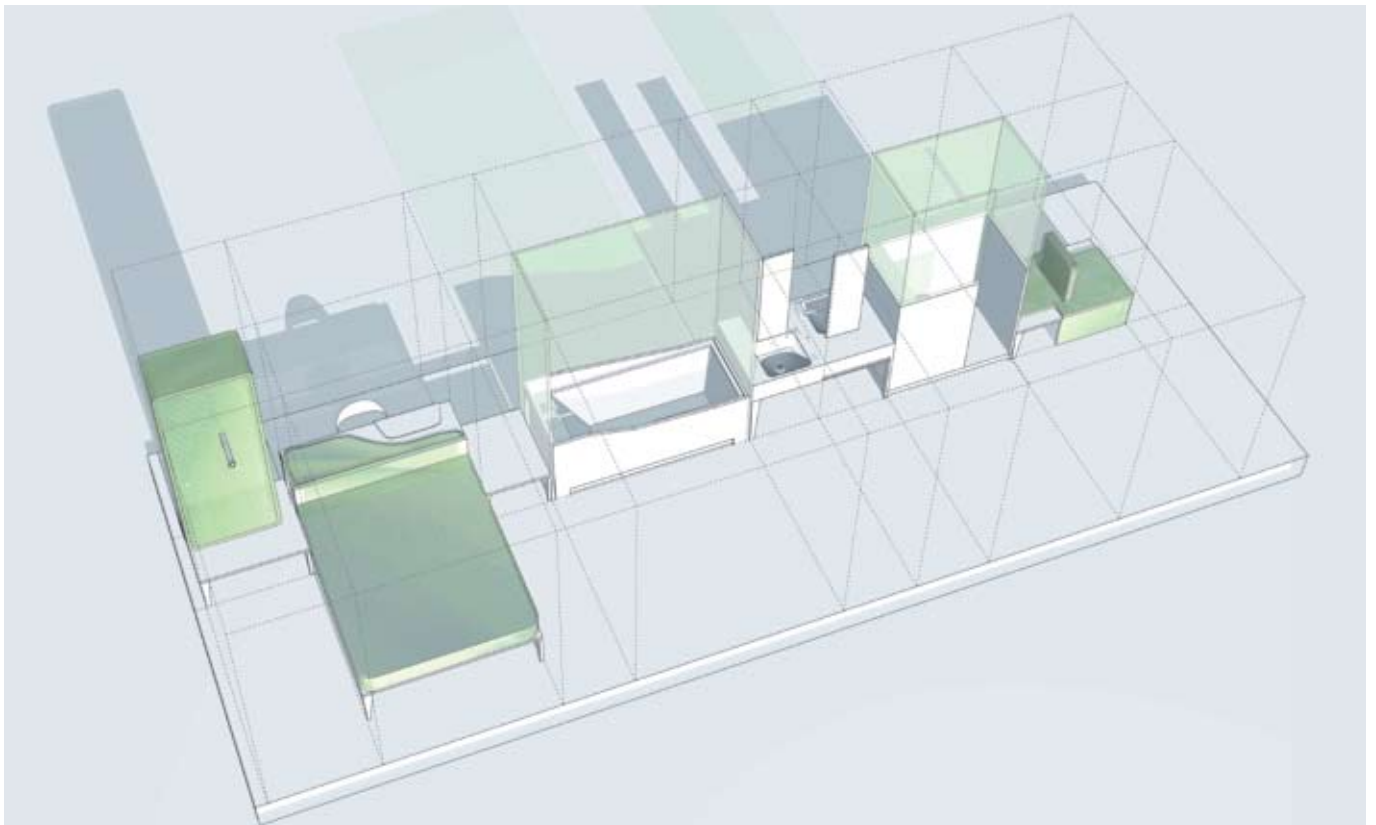
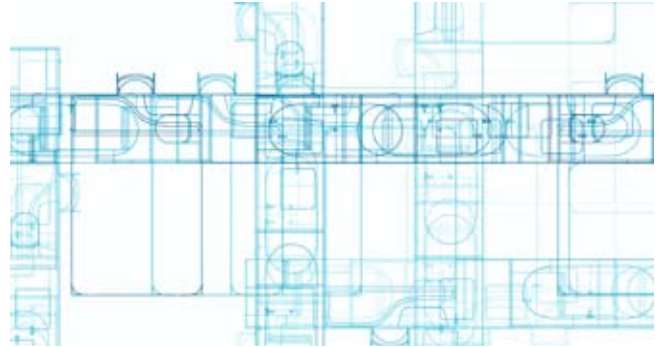
London

| Studio 110,
| 10 Great Russell Street
| WC1B 3BQ - London
| t:+44(0)20 3239 9332

| email: info@r-are.net
| www.r-are.net

A-typic

concept design for The Sleep Event 2011



Location: London, United Kingdom
Client: The Sleep Event,
2011

Our work as a practice encounters the need to develop functional and comfortable hotel rooms with a cutting-edge design for non-standard hotel room dimensions and layouts.

This model room presented at the Sleep event 2011 will question how hotel room design can develop within non-standard spaces with a standardized design. The central spine element, containing all facilities, is developed as an island, which defines functions while preserving the openness to provide a feeling of space in contrived dimensions.

The novelty in our approach lies in the fact that this island is an assemblage of well crafted furniture elements, rather than a monolithic block. The hotel room thus becomes a space where light-weight furniture modules merge into a coherent whole.

Exhibiting the inventiveness that can be explored in such conditions, both at the scale of the layout and at the scale of the furniture design, RARE is collaborating with **Anne Kyyrö Quinn, Ligne Roset, Corian, Villeroy&Boch, Lano, Geberit, Bristan** and **Ligna** to develop a range of dual-function furniture pieces, responding to such constrained conditions.

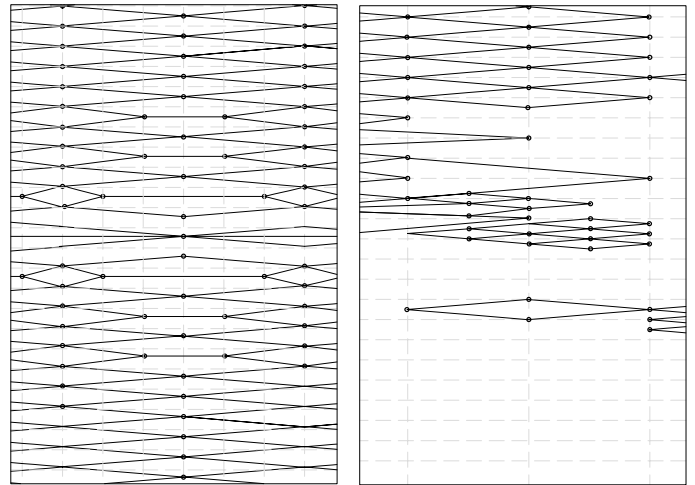
A-typic

Concept design for The Sleep Event 2011

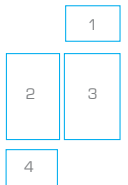
rare architecture
London - Paris

A-typic

concept design for The Sleep Event 2011



- 1. Textile pattern drawings
- 2. Corian panels
- 3. Anne Kyyrö Quinn textiles
- 4. Corian, glass and porcelain



A-typic

Concept design for The Sleep Event 2011

rare architecture
London - Paris



Profiles

rare

Operating worldwide from offices in Paris and London, the practice exercises an ethos of mixing commissions with research to produce tailored work using new materials, innovative typologies and advanced modes of design and production to produce sustainable, efficient and distinctive projects. We stress the need to establish a tailored response, which implies a singular design process for each project with an adapted use of our network of competencies. Mixing different endeavours we sensibly apply transversal thinking between teaching, research and commissions.

RARE architecture was granted the **RIBA Award 2011** and received the **RICS London Project of the Year** as well as the **RICS Conservation 2011 Award** for The Town Hall Hotel project in London. Highly commended, RARE has been distinguished amongst the best 21 emerging architectural practices worldwide as part of the **WAN 21 for 21 Award**.

The work of the office has been featured in : Wallpaper*, RIBA Journal, AJ-Architect's Journal, Baumeister, ArchiCree, The Financial Times, FRAME, Blueprint, AD (UK, Spain, Russia, France), The Times of London, IDEAT, amongst others and will be part of the forthcoming Taschen **Architecture Now 8**.

This project is a close collaboration with the following sponsors:

Ligne Roset

Known for its collaborations with the foremost talents in contemporary design, Ligne Roset presents the consumer with a lifestyle choice, complementing its furniture collections with decorative accessories, lighting, rugs, textiles and occasional items.

Anne Kyyrö Quinn

Resembling artworks more than conventional fabrics, our contemporary creations are not textiles as you once knew them. Cut, sewn and finished by hand, our unique choice of luxury natural fabrics are crafted into interior textiles designed to harmonise timelessly with any setting.

Corian

With its balance of beauty and performance, Corian® is a solid surface offering superior design possibilities and excellent long-term performance, used both in the home and in many different commercial environments, from hotels to healthcare, retail to marine.

Lano

With the ability to produce broadloom carpet, carpet tiles and rugs as well as artificial grass, Lano Carpets product offering also extends to a complete spectrum designed to cover everything from the office to the home.

Ligna

Ligna is specialized in hotel refurbishment for some of the leading European Hotel Groups. We command a supply chain of more than 50 furniture manufacturers from Bulgaria and South-East Europe, offering a complete project management service.

Villeroy & Boch

Innovative strength, lifestyle competence and consumer orientation rank amongst the most important factors contributing to the market position of the ceramics manufacturer Villeroy & Boch.

Geberit

With its innovative system solutions in the fields of sanitary and piping systems, Geberit continuously sets new trends. Geberit branded products are noted for high quality, longevity and easy installation. Geberit is a world leader in advanced plumbing and plastics technologies.

Bristan

Combining exceptional design with value for money and smart features, Bristan is the UK's largest supplier of bathroom and kitchen taps, showers, shower enclosures, decorative heating and bathroom accessories.